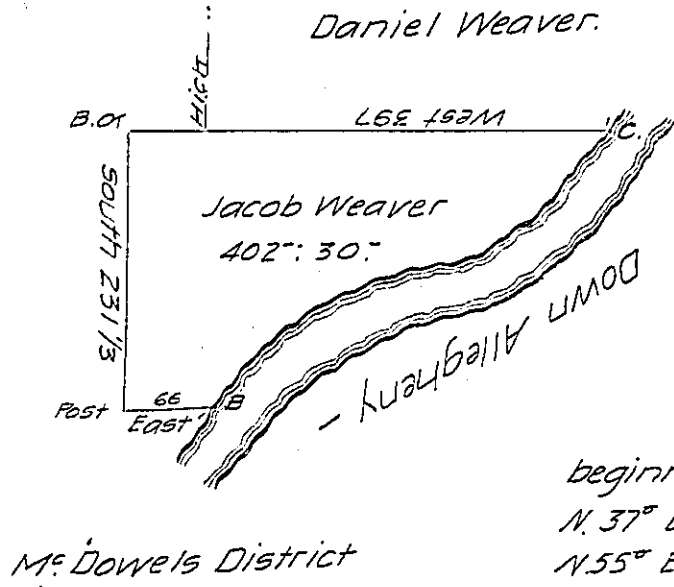


Pg - 137



Courses on the River  
 beginning at B, and thence  
 N. 37° E. 67. upwards to C.  
 N. 55° E. 41.  
 N. 82° E. 50.  
 N. 72° E. 30 1/2  
 N. 64° E. 90.  
 N. 50° E. 32  
 N. 42 1/2° E. 108  
 328 1/2

Surveyed on the 22nd day of June 1795 the above described Tract of Land, in District No. 6, in pursuance of a Warrant to Jacob Weaver, dated 20th December 1793. Containing four hundred two acres & thirty perches and allowance of six per Cent.

Saml. Nicholson D.S.

To Daniel Brodhead Esqr.

Surveyor General.

IN TESTIMONY that the above is a copy of the original remaining on file in the Department of Internal Affairs of Pennsylvania, made conformably to an Act of Assembly approved the 16th day of February 1833, I have hereunto set my hand and caused the Seal of said Department to be affixed at Harrisburg, this twenty-seventh day of June 1907

*Henry Houck*  
 Secretary of Internal Affairs.